



Baan Khaolak
BEACH RESORT



68 Rooms

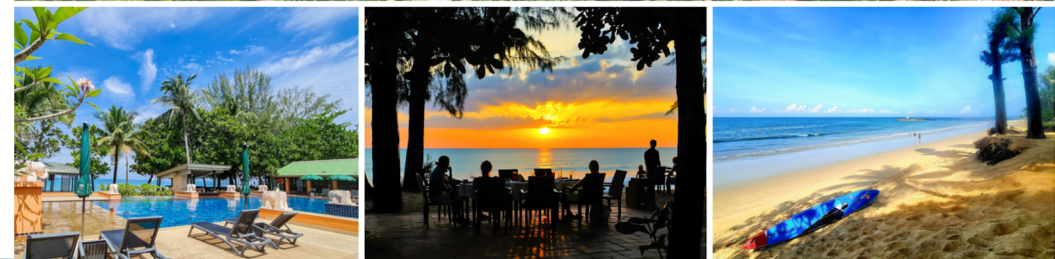
Attractions/Other Destinations

Khao Lak Beach	0 m
Khao Lak Center	500 m
Khao Lak Lamru National Park	2.3 km
Bang Niang Market	3.4 km
Thap Lamu Pier	12 km
Phang-nga Town	54 km
Phuket Airport	73 km

Photos: www.flickr.com/photos/baankhaolakbeachresort/albums



26/16 Khaolak Beach, Phetchakasem Rd., Khuk Khak, Takuapa Phang Nga 82220 - Thailand
 Tel: +66 76 485 198 Fax: +66 76 485 125
 Email: rsvn@baankhaolakbeachresort.com Web: www.baankhaolakbeachresort.com



A Charming Beach Resort Nestled in The Heart of a Tropical Garden

Facilities & Services

- 1 Swimming Pool with Jacuzzi
- 1 Restaurant
- 1 Pool Bar
- 24 Hours Reception
- 24 Hours Security Service
- Deposit Box
- Gym Room (with Wheelchair Fitness Gear)
- Meeting/Conference Room
- Reading Room
- Kids Corner
- Kids Outdoor Playground
- Wi-Fi Access
- Thai Massage (located on the beach area)
- Excursions & Tour Services
- Fat Bike for Rent
- Kayak for Rent
- Stand-up Paddle Board for Rent
- Shower and Changing Room (for early arrival or late departure)
- Airport Transfer
- Car Rental
- Taxi Service
- Car Park
- Wheelchair-accessible Resort, from lobby to reading room, breakfast room, and swimming pool
- Toilets for a person with mobility impairment in the lobby and the swimming pool area

Accommodation

Each room is comfortably decorated in a Thai Contemporary style. Guest room amenities include private balcony/terrace, air conditioning, shower/bathtub, hair dryer, satellite TV, fridge, safety box, coffee/tea making facilities and Internet connection (WiFi access).

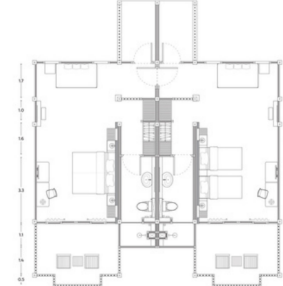
Superior

16 Rooms
Room Size: 45 sq.m.
Location/View: Garden View at 1st - 2nd Floor
Bedding: 1 King or 2 Singles
Connecting Room Possible: Yes



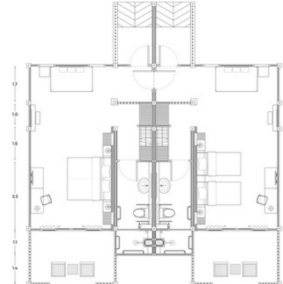
Family

12 rooms
Room Size: 59 sq.m.
Location/View: Garden View at 1st Floor
Bedding: 1 King or 2 Singles
Connecting Room Possible: Yes



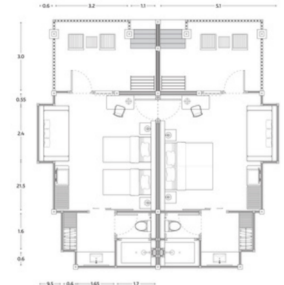
Family - Wheelchair Accessible

12 rooms
Room Size: 59 sq.m.
Location/View: Garden View at Ground Floor
Bedding: 1 King or 2 Singles
Connecting Room Possible: Yes



Deluxe Bungalow

18 Rooms
Room Size: 52 sq.m.
Location/View: Garden View at Ground Floor
Bedding: 1 King or 2 Singles
Connecting Room Possible: Yes



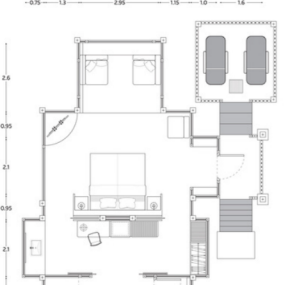
Deluxe Villa

7 Rooms
Room Size: 58 sq.m.
Location/View: Garden View or Pool View at Ground Floor
Bedding: 1 King
Connecting Room Possible: No



Beach Front Villa

3 Rooms
Room Size: 88 sq.m.
Location/View: Sea View at Ground Floor
Bedding: 1 King
Connecting Room Possible: No



Room Configuration Policy

- Maximum occupancy of 2 adults and 1 child (below 12 years old) with a roll-away bed (charge) in Superior Room
- Maximum occupancy of 3 adults or 2 adults + 2 children (below 12 years old) using a day bed and a rollaway bed (charge) in Family Room
- Maximum occupancy of 3 adults or 2 adults + 2 children (below 12 years old), offering a day bed and a rollaway bed (charge) in Family Wheelchair Accessible Room
- Maximum occupancy of 3 adults or 2 adults + 1 child (below 12 years old) with a day bed (charge) in Deluxe Bungalow
- Maximum occupancy of 3 adults or 2 adults + 2 children (below 12 years old) with a day bed and or rollaway bed (charge) in a Deluxe Villa
- Maximum occupancy of 3 adults or 2 adults + 2 children (below 12 years old) with a daybed, 2 separate mattresses will be provided (charge) in Beach Front Villa
- For an infant (under 3 years old), a baby cot will be provided free of charge upon request